

# WMAccess

Query Category

T4

Explanations

FAQ

Examples

## Overview:

This query category is applied for two areas and thus presented separately here.

Category: T4

Type of query: **Explicit selection of a WKN / ISIN and a field-ID such as “GD504B”** / query of the field history of a field-ID

Quality: **Single field display** / field history > 1 hit

The following slides refer to the first area. Later, also the second application area is explained.

## **Type of query: Explicit selection of a WKN / ISIN and a field-ID**

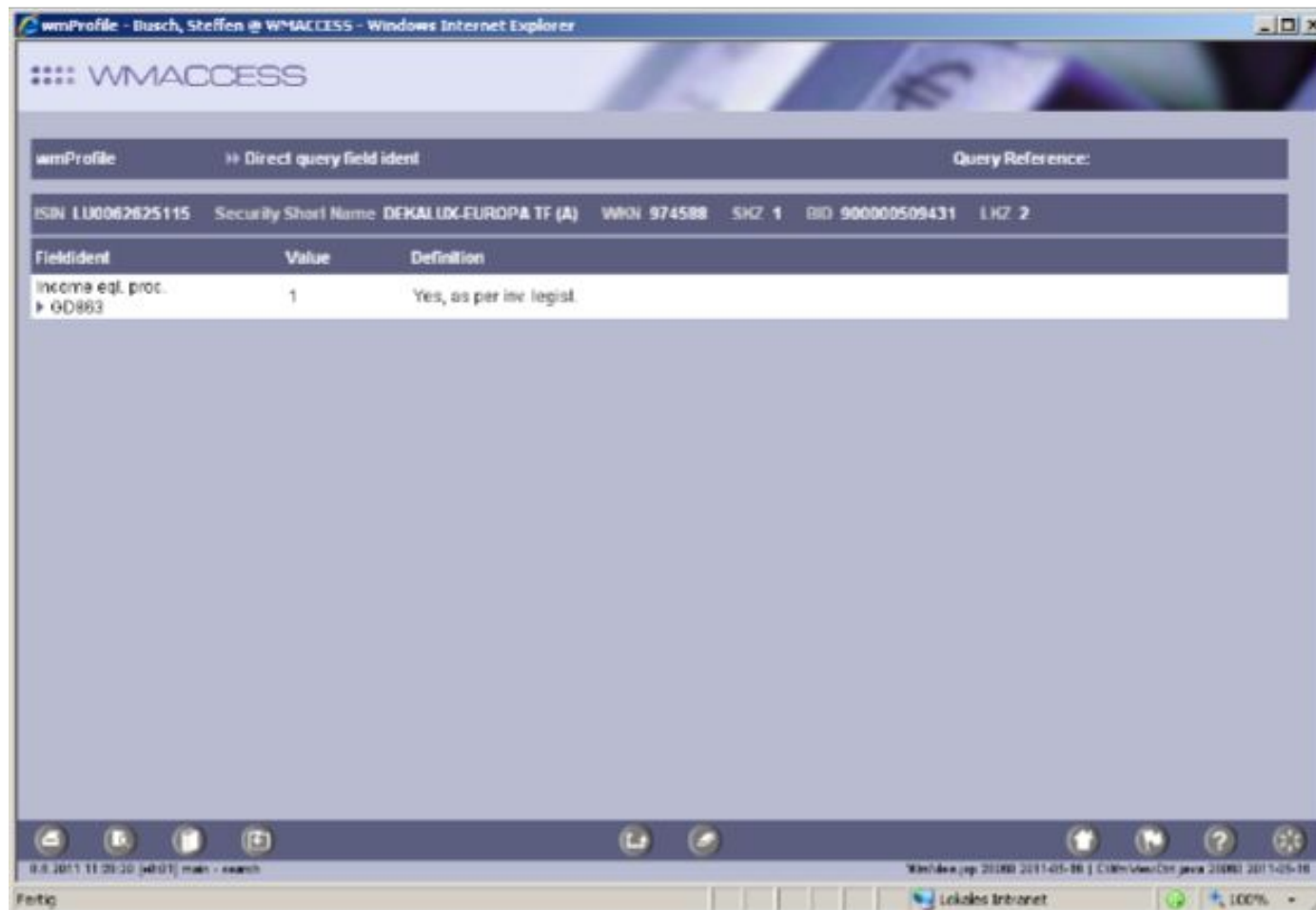
*What is an explicit selection of a WKN / ISIN and a field-ID?*

The wmProfile query profile direct query field ident allows the targeted query of an individual WM field for a security. This is particularly interesting for master data fields (work field G). Also for cost reasons the query of an individual field may be attractive, since the detail display of a query leads to the more favourable category T4 – instead of T3 in the event of a complete master data query.

# Quality: Single field display

*What is a single field display?*

An individual field display is the detail display of the query profile direct query field ident and contains the desired data field for the queried ISIN or WKN.



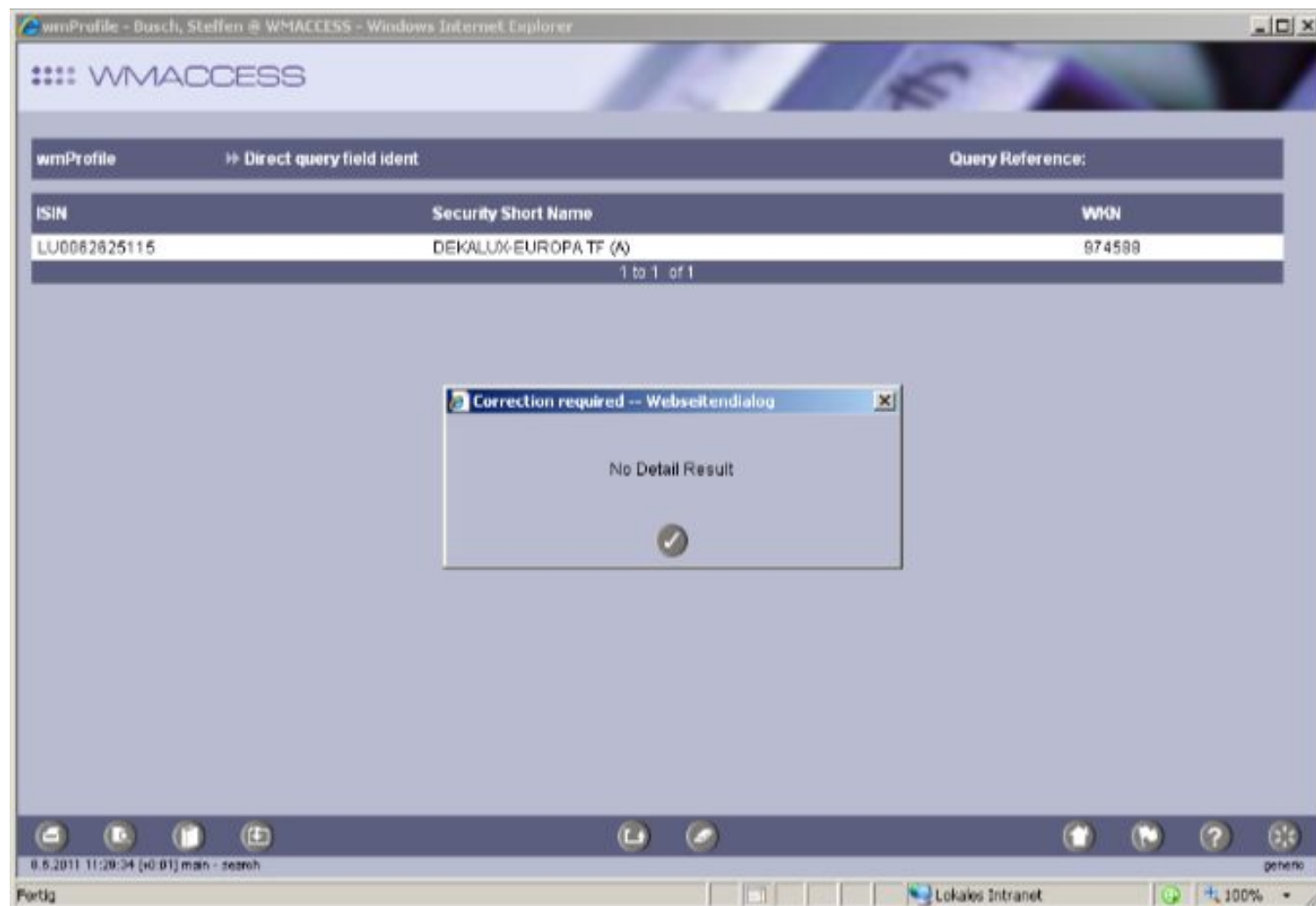
The screenshot shows a web browser window titled "wmProfile - Busch, Steffen @ WMACCESS - Windows Internet Explorer". The page displays the "WMACCESS" logo and a navigation bar with "wmProfile" and "Direct query field ident". Below this, a "Query Reference:" section lists details for ISIN LU0062625115, including Security Short Name, WKN, SKZ, BID, and LHZ. A table below shows the field details for "income eqt. proc." with a value of 1 and a definition of "Yes, as per inv. legisl.".

Fieldident	Value	Definition
income eqt. proc. GD883	1	Yes, as per inv. legisl.

# FAQ:

*What happens, if the desired field for the queried WKN or ISIN is not available?*

You will receive a notification – free of charge.



## FAQ:

*To which query profiles or work fields does this category apply?*

Only for the query profile “Direct query field ident”, which is available under wmProfile.

*Will T4 be charged again, if I query the data field again?*

Yes, each display is charged, independent of whether it was queried before.

## Overview:

The following slides refer to the second area:

Category: T4

Type of query: Explicit selection of a WKN / ISIN and  
a field-ID such as “GD504B” /

**query of the field history of a field-ID**

Quality: Single field display /

**field history > 1 hit**

## **Type of query: Query of the field history of a field-ID**

*What is a query of the field history?*

For individual fields such as GD504B (application investment tax act, InvStG) a field history is available, in order to view historical values. One click on the name of a field identification such as “Application InvStG” will open the display of the historical value incl. delivery date.



# Quality: Field history > 1 hit

*What is a field history > 1 hit?*

If more than one historical value (hit) for the selected field identification e. g. “Application InvStG”, is displayed, we talk of a field history > 1 hit.

The screenshot shows the WMAccess web application interface. The main table displays security data for ISIN IE00B2QL3783. A field history pop-up window is open for the field 'Inv. Tax Act app.' (Fieldident: GD504B - Inv. Tax Act app.).

Fieldident	Value	Definition
GD472	12	Book entry
GD491A	9	Registered to nominee
GD492	2	Registered securities
GD493	24	For inv. reinv. cash
GD503	2	Inv. corp. f. pot. int. inc.
GD504	0	Fd. publ. int. profits
GD504A	1	Transparent fund
GD504B	36.0000000	
GD505A	25.00000000	
GD505B	2	General loss fund
GD505E	E	unknown / being verified

Value	Definition	Delivery Date
1	Transparent fund	14/01/2011
5	Transp. fds a. 31.12.03	15/06/2013
2	Non-transparent fund	10/06/2013
1	Transparent fund	29/04/2009
5	Transp. fds a. 31.12.03	29/04/2009

## FAQ:

*To which query profiles or work fields does this category apply?*

Basically for all query profiles and individual fields. What happens, if no historical parameters are available?

*What happens, if there are no historical values for the desired field?*

You will receive a notification – free of charge.

[illegible]

## FAQ:

*Will a query only be charged in the event of only one historical value (=current value)?*

No, a T4 query is only charged, if more than one historical value is displayed.

*Will T4 be charged again, if a field history is called up a second time?*

Yes, each display of a field history with more than one historical value will be charged, independent of whether it has been displayed before.



---

WMACCESS

Intelligent and easy search –  
quick results and decision!

[www.wmaccess.com](http://www.wmaccess.com)