

WMAccess

Query Category

T1

Explanations

FAQ

Examples

Overview:

Category: T1

Type of query: Search with standard mode

Quality: Hit list

Type of query: Search with standard mode

What is a search with standard mode?

“Normal” search in the wmView or wmProfile query profiles. “Normal” in this case refers to the use of the standard search function as compared to the expert search, which is also offered in some query profiles. An expert search always carries the ending “-Expert” in the name.

The screenshot displays the WMACCESS web application interface. At the top, there's a navigation bar with 'wmView', 'wmProfile', and 'WMACCESS' links. Below this, a search form is visible with the following structure:

Field name	Select value
VR20	<input type="text"/>
VR21	<input type="text"/>
VR22	<input type="text"/>
VR23	<input type="text"/>
VR24	<input type="text"/>
VR25	<input type="text"/>
VR26	<input type="text"/>
VR27	<input type="text"/>
VR28	<input type="text"/>
VR29	<input type="text"/>
VR30	<input type="text"/>
VR31	<input type="text"/>
VR32	<input type="text"/>
VR33	<input type="text"/>
VR34	<input type="text"/>
VR35	<input type="text"/>
VR36	<input type="text"/>
VR37	<input type="text"/>
VR38	<input type="text"/>
VR39	<input type="text"/>
VR40	<input type="text"/>
VR41	<input type="text"/>
VR42	<input type="text"/>
VR43	<input type="text"/>
VR44	<input type="text"/>
VR45	<input type="text"/>
VR46	<input type="text"/>
VR47	<input type="text"/>
VR48	<input type="text"/>
VR49	<input type="text"/>
VR50	<input type="text"/>
VR51	<input type="text"/>
VR52	<input type="text"/>
VR53	<input type="text"/>
VR54	<input type="text"/>
VR55	<input type="text"/>
VR56	<input type="text"/>
VR57	<input type="text"/>
VR58	<input type="text"/>
VR59	<input type="text"/>
VR60	<input type="text"/>
VR61	<input type="text"/>
VR62	<input type="text"/>
VR63	<input type="text"/>
VR64	<input type="text"/>
VR65	<input type="text"/>
VR66	<input type="text"/>
VR67	<input type="text"/>
VR68	<input type="text"/>
VR69	<input type="text"/>
VR70	<input type="text"/>
VR71	<input type="text"/>
VR72	<input type="text"/>
VR73	<input type="text"/>
VR74	<input type="text"/>
VR75	<input type="text"/>
VR76	<input type="text"/>
VR77	<input type="text"/>
VR78	<input type="text"/>
VR79	<input type="text"/>
VR80	<input type="text"/>
VR81	<input type="text"/>
VR82	<input type="text"/>
VR83	<input type="text"/>
VR84	<input type="text"/>
VR85	<input type="text"/>
VR86	<input type="text"/>
VR87	<input type="text"/>
VR88	<input type="text"/>
VR89	<input type="text"/>
VR90	<input type="text"/>
VR91	<input type="text"/>
VR92	<input type="text"/>
VR93	<input type="text"/>
VR94	<input type="text"/>
VR95	<input type="text"/>
VR96	<input type="text"/>
VR97	<input type="text"/>
VR98	<input type="text"/>
VR99	<input type="text"/>
VR100	<input type="text"/>

At the bottom of the form, there are buttons for 'Search', 'Reset', and 'Cancel'. The status bar at the very bottom shows 'Page 1' and '100%' zoom level.

Quality: Hit list

What is a hit list?

A hit list is displayed by WMACCESS, if your search criteria have lead to more than one hit. In these cases, a hit list is displayed initially.

WinView - Bosch, Stoffen & WMACCESS - Windows Internet Explorer

WMACCESS

Workflow				In (S) Dividend and Coupon Payments		Query Reference:
ISIN	Security Short Name	WKN	Ex date	Dividend proposal	Div. payment type	
LU0062620115	DEVILLIK EUROPA TF (S)	974588		10 Deemed distrib. income	10 Zero ODI or inc. post.	
LU0062620115	DEVILLIK EUROPA TF (S)	974588	20/11/2009	04 Distribution of earnings	10 Cash distr. and ODI	
LU0062620115	DEVILLIK EUROPA TF (S)	974588	20/11/2009	04 Distribution of earnings	10 Cash distr. and ODI	
LU0062620115	DEVILLIK EUROPA TF (S)	974588	20/11/2009	04 Distribution of earnings	10 Cash distribution	
LU0062620115	DEVILLIK EUROPA TF (S)	974588	20/11/2009	04 Distribution of earnings	10 Cash distribution	
LU0062620115	DEVILLIK EUROPA TF (S)	974588	22/11/2004	04 Distribution of earnings	10 Cash distribution	
LU0062620115	DEVILLIK EUROPA TF (S)	974588	20/11/2003	04 Distribution of earnings	10 Cash distribution	
LU0062620115	DEVILLIK EUROPA TF (S)	974588	20/11/2003	04 Distribution of earnings	10 Cash distribution	
LU0062620115	DEVILLIK EUROPA TF (S)	974588	20/11/2000	04 Distribution of earnings	10 Cash distribution	
LU0062620115	DEVILLIK EUROPA TF (S)	974588	20/11/2000	04 Distribution of earnings	10 Cash distribution	
LU0062620115	DEVILLIK EUROPA TF (S)	974588	20/11/2000	04 Distribution of earnings	10 Cash distribution	
LU0062620115	DEVILLIK EUROPA TF (S)	974588	20/11/2000	04 Distribution of earnings	10 Cash distribution	
LU0062620115	DEVILLIK EUROPA TF (S)	974588	20/11/2000	04 Distribution of earnings	10 Cash distribution	
LU0062620115	DEVILLIK EUROPA TF (S)	974588	20/11/2000	04 Distribution of earnings	10 Cash distribution	
LU0062620115	DEVILLIK EUROPA TF (S)	974588	20/11/2000	04 Distribution of earnings	10 Cash distribution	
1 to 15 of 15						

8.8.2011 11:45:08 (p.4) mab - oscar

winview.jsp?SECID=201145108 | Copyright Copyright 2008 - 2011 G&S

Fenp

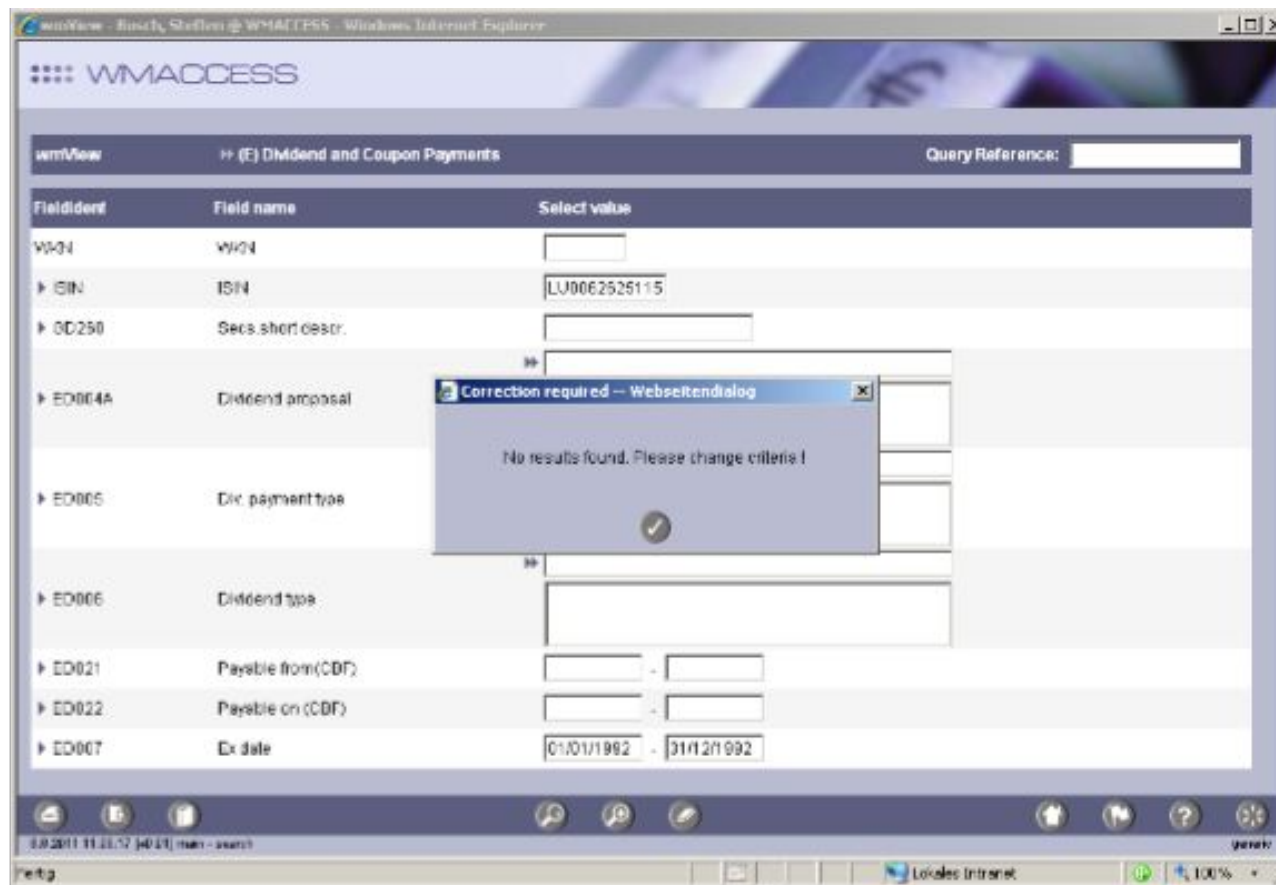
Lokales Intranet

100%

FAQ:

What happens, if by means of the search criteria no data (no hits) are found?

You will receive a notification – free of charge.



FAQ:

To which query profiles or work fields does this category apply?

Basically to all query profiles, except

- searches in expert mode
- searches in your user profile

=> Both are charged as a query in the category T2.

When will T1 not be charged?

The search criteria lead to exactly one hit, which is displayed immediately in the detail display.

=> See query category T3, T4, T5 or T6.

Will T1 be charged again after a jump back from the detail display?

No.

Example:

Search fund revenues for ISIN LU0062625115

winView - Busch, Steffen @ WMACCESS - Windows Internet Explorer

WMACCESS

winView >> (E) Dividend and Coupon Payments > Expert Query Reference:

FieldIdent	Field name	Select value
WMN	WMN	<input type="text"/>
> ISIN	ISIN	LU0062625115
> OD250	Secs short descr.	<input type="text"/>
> ED004A	Dividend proposal	<input type="text"/>
> ED005	Div. payment type	<input type="text"/>
> ED006	Dividend type	<input type="text"/>
> ED021	Payable from (CDF)	<input type="text"/> - <input type="text"/>
> ED022	Payable on (CDF)	<input type="text"/> - <input type="text"/>
> ED007	Ex date	<input type="text"/> - <input type="text"/>

9/9/2011 11:33:52 [40.01] main - return

Search

winView - Busch, Steffen @ WMAccess - Windows Internet Explorer

WMAccess

winView » (E) Dividend and Coupon Payments Query Reference:

ISIN	Security Short Name	WKN	Ex date	Dividend proposal	Div. payment type
LU0082825115	DEKALUX-EUROPA TF (A)	974588		10 Deemed distrib. income	10 Zero DDI or Inc. port
LU0082825115	DEKALUX-EUROPA TF (A)	974588	20/11/2009	04 Distribution of earnings	16 Cash distr. and DDI
LU0082825115	DEKALUX-EUROPA TF (A)	974588	20/11/2008	04 Distribution of earnings	16 Cash distr. and DDI
LU0082825115	DEKALUX-EUROPA TF (A)	974588	20/11/2007	04 Distribution of earnings	15 Cash distribution
LU0082825115	DEKALUX-EUROPA TF (A)	974588	20/11/2006	04 Distribution of earnings	15 Cash distribution
LU0082825115	DEKALUX-EUROPA TF (A)	974588	21/11/2005	04 Distribution of earnings	15 Cash distribution
LU0082825115	DEKALUX-EUROPA TF (A)	974588	22/11/2004	04 Distribution of earnings	15 Cash distribution
LU0082825115	DEKALUX-EUROPA TF (A)	974588	20/11/2003	04 Distribution of earnings	15 Cash distribution
LU0082825115	DEKALUX-EUROPA TF (A)	974588	20/11/2002	04 Distribution of earnings	15 Cash distribution
LU0082825115	DEKALUX-EUROPA TF (A)	974588	20/11/2001	04 Distribution of earnings	15 Cash distribution
LU0082825115	DEKALUX-EUROPA TF (A)	974588	20/11/2000	04 Distribution of earnings	15 Cash distribution
LU0082825115	DEKALUX-EUROPA TF (A)	974588	22/11/1999	04 Distribution of earnings	15 Cash distribution
LU0082825115	DEKALUX-EUROPA TF (A)	974588	20/11/1998	04 Distribution of earnings	15 Cash distribution
LU0082825115	DEKALUX-EUROPA TF (A)	974588	20/11/1997	04 Distribution of earnings	15 Cash distribution
LU0082825115	DEKALUX-EUROPA TF (A)	974588	20/11/1996	04 Distribution of earnings	15 Cash distribution

1 to 15 of 15

03.05.2011 11:11:09 [401] man - search

Kirchapp 2000 11/11/05-10 / C:\WebForm\GstJerna 2000 11/11/05-10

Netg Lokales Internet 100%

Tips:

- A targeted search with further search criteria such as an Ex-date may lead to the event that only one hit is found which will lead directly to a detail display. In this event you spare the hit list and thus the query of the category T1.
- The hit list can be printed out free of charge. This information may be helpful to provide future queries for the same security with additional search criteria and thus get directly to a detail display.



WMACCESS

Intelligent and easy search –
quick results and decision!

www.wmaccess.com