

WMAccess

Query Category

G6

Explanations

FAQ

Examples

Overview:

Category: G6

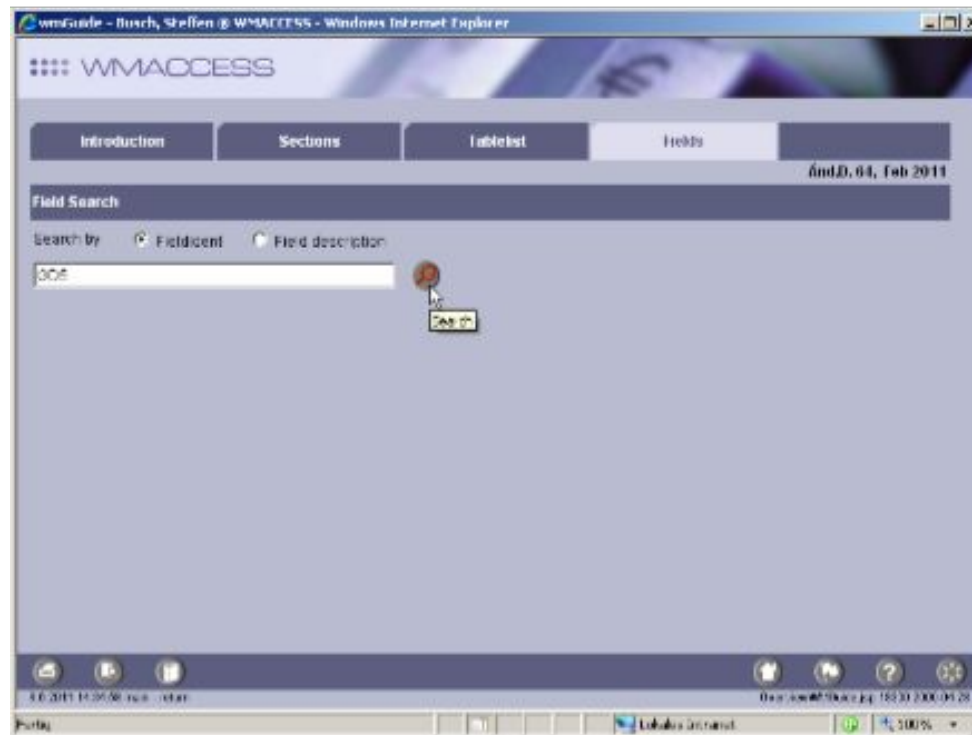
Type of query: Research field ident

Quality: Hit list of the searched field string

Type of query: Research field ident

What is search field ident?

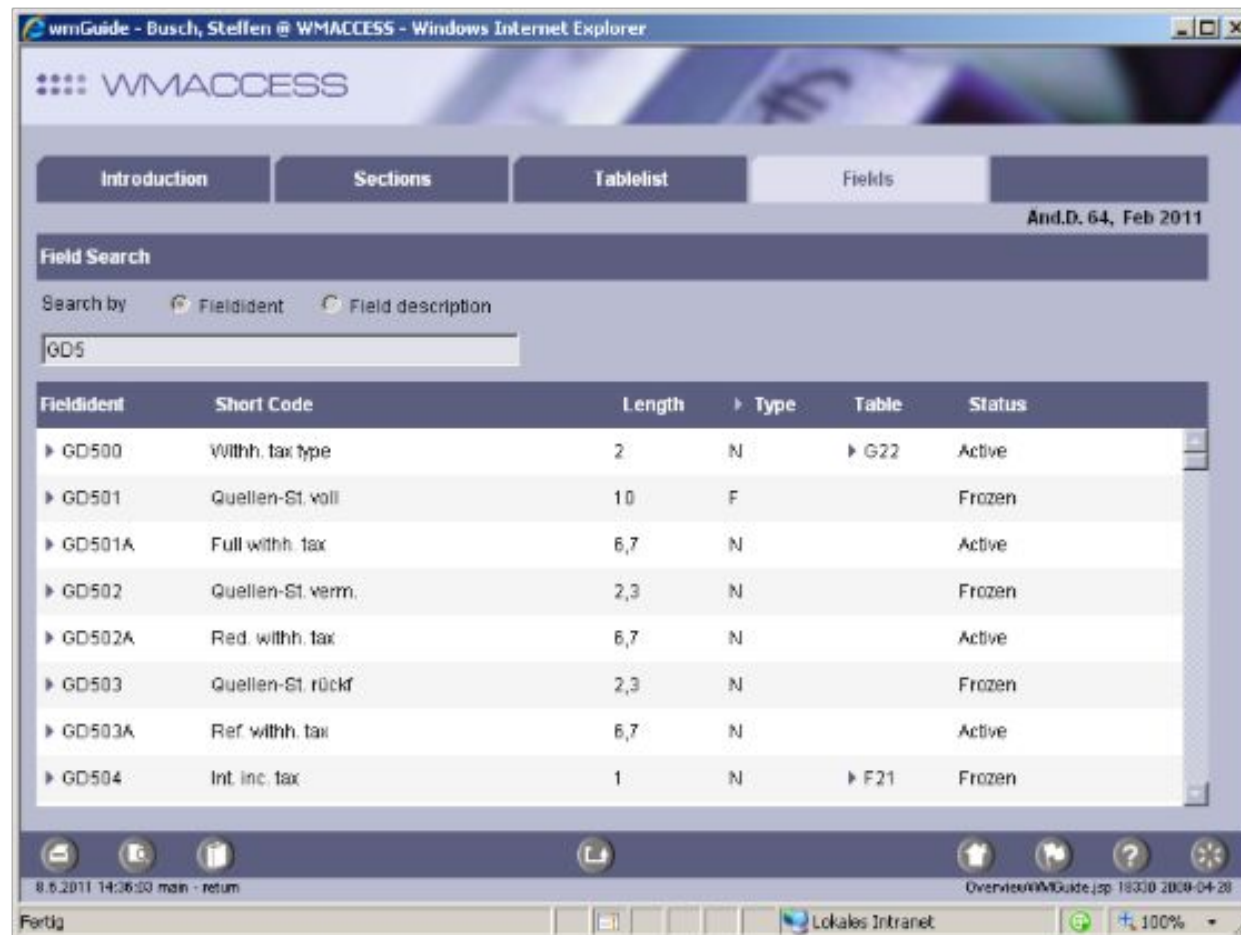
In wmGuide you have the option to search for field names as well as field identifications such as GD504B in the tab “Fields”. If in the search function the first menu box is selected, the search is performed by means of the field identification.



Quality: Hit list of the searched field string

What is a hit list of the searched field string?

If the search by means of the search criterion did not lead to exactly one WM field, a hit list of all possible matching WM fields is displayed.



The screenshot shows the WMACCESS web application interface. At the top, there's a navigation bar with tabs: Introduction, Sections, Tablelist, Fields, and a date indicator 'And.D. 64, Feb 2011'. Below the navigation bar is a 'Field Search' section with a search criteria dropdown set to 'Fieldident' and a search input field containing 'GD5'. The search results are displayed in a table with the following columns: Fieldident, Short Code, Length, Type, Table, and Status.

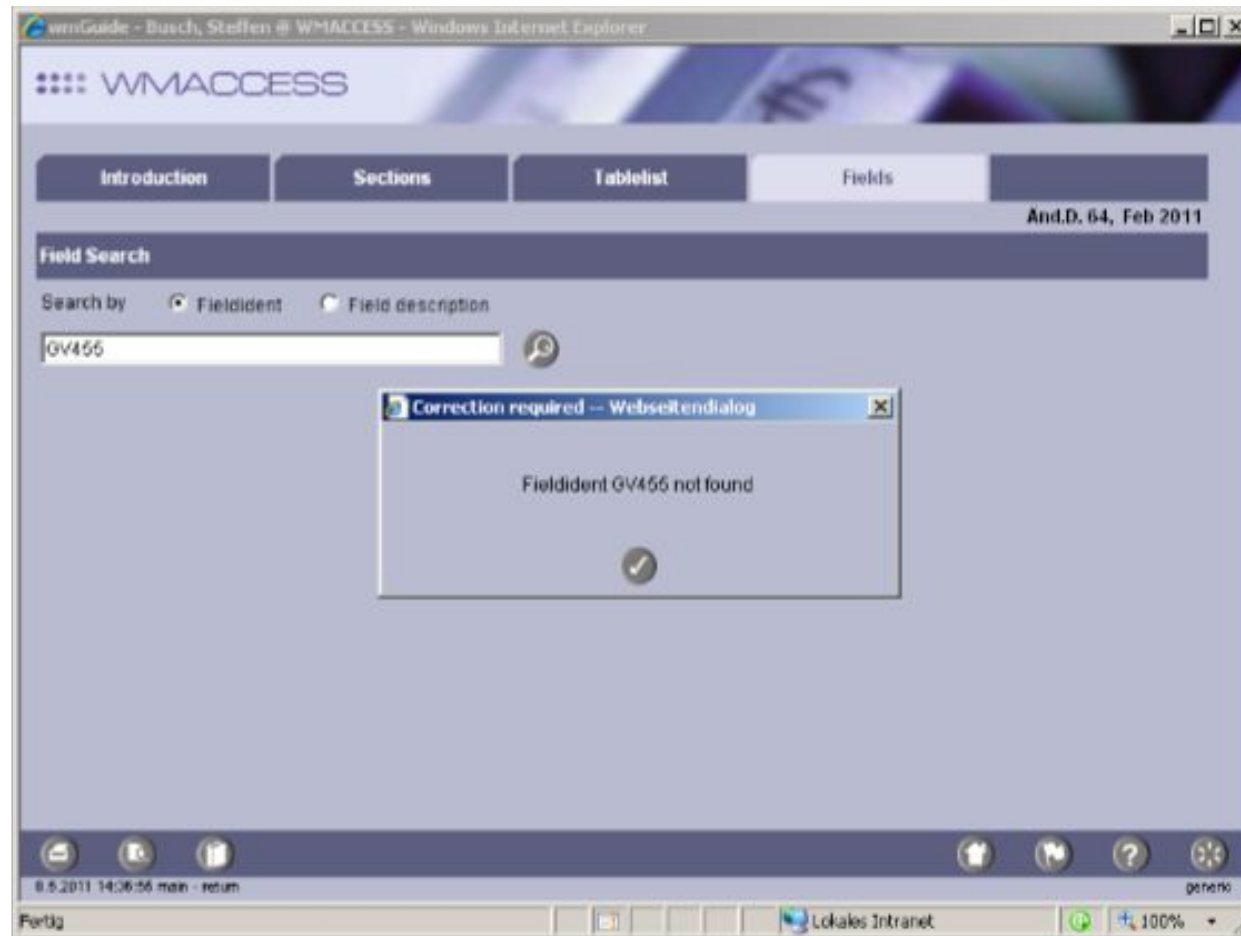
Fieldident	Short Code	Length	Type	Table	Status
▶ GD500	Withh. tax type	2	N	▶ G22	Active
▶ GD501	Quellen-St. voll	10	F		Frozen
▶ GD501A	Full withh. tax	6,7	N		Active
▶ GD502	Quellen-St. verm.	2,3	N		Frozen
▶ GD502A	Red. withh. tax	6,7	N		Active
▶ GD503	Quellen-St. rückf	2,3	N		Frozen
▶ GD503A	Ref. withh. tax	6,7	N		Active
▶ GD504	Int. inc. tax	1	N	▶ F21	Frozen

The bottom of the screenshot shows a status bar with the date '8.5.2011 14:26:50', the user 'man - return', and the page title 'OverviewWMGuide.jsp: 18310 2009-04-28'. The taskbar at the very bottom shows 'Fertig' and 'Lokales Intranet'.

FAQ:

What happens, if by means of the search criteria no data (no hits) are found?

You will receive a notification – free of charge.



FAQ:

For which areas does this category apply?

This query category is only charged in wmGuide in the tab “Fields”.

Will G6 be charged again, when the search is performed for a second time?

Yes, each search of a field name will be charged, if it leads to a hit list, independent of whether this search / hit list has been performed / displayed before.

Example:

Search field identification starting with „GD5“

The image shows two overlapping screenshots of the WMACCESS web application. The left screenshot shows the 'Field Search' interface with the search criteria set to 'Fieldident' and the search term 'GD5'. The right screenshot shows the search results table.

WMACCESS - Field Search Results

Fieldident	Short Code	Length	Type	Table	Status
GD500	Withh. tax type	2	N	G22	Active
GD501	Quellen-St. voll	10	F		Frozen
GD501A	Full withh. tax	6,7	N		Active
GD502	Quellen-St. verm.	2,3	N		Frozen
GD502A	Red. withh. tax	6,7	N		Active
GD503	Quellen-St. rückf	2,3	N		Frozen
GD503A	Ref. withh. tax	6,7	N		Active
GD504	Int. inc. tax	1	N	F21	Frozen

The application interface includes navigation tabs for 'Introduction', 'Sections', 'Tablelist', and 'Fields'. The status bar at the bottom indicates the date '8.6.2011 14:36:03 main - return' and the browser window title 'wmGuide - Busch, Steffen @ WMACCESS - Windows Internet Explorer'.



WMACCESS

Intelligent and easy search –
quick results and decision!

www.wmaccess.com