

# WMAccess

Query Category

G3

Explanations

FAQ

Examples

## Overview:

Category: G3

Type of query: Selection of the introduction

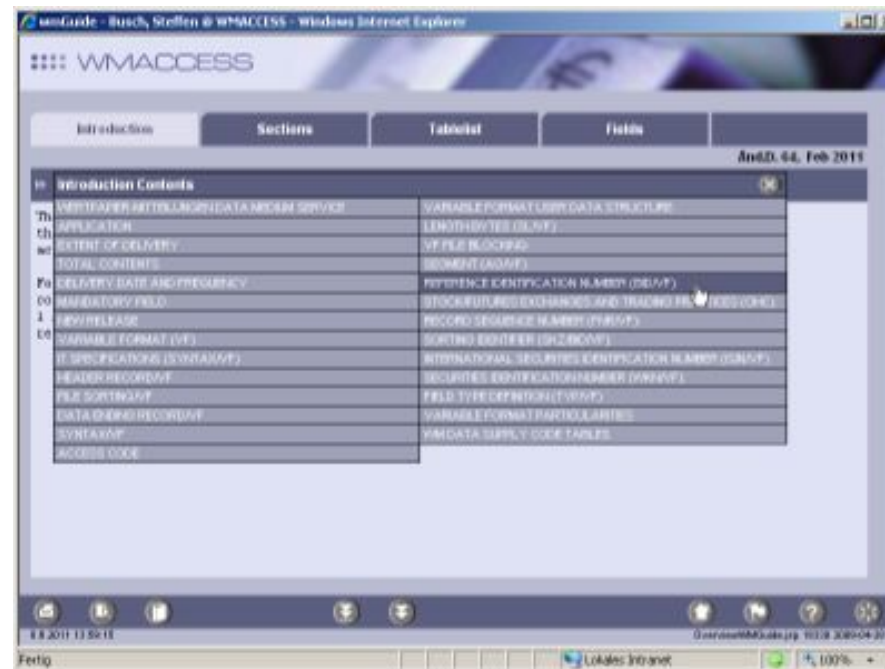
Quality: Display of the introduction pages incl. paging within the introduction

# Type of query: Selection of the introduction

*What is a selection of the introduction?*

The introduction is called up within wmGuide with the tab “Introduction”.

The introduction itself is divided into introduction pages and contains general information by the WM data service on WM data, e. g. comments on the Reference Identification Number (BID).



# Quality: Display of introduction pages

*What is a display of introduction pages?*

An introduction page is displayed when calling up or browsing in the wmGuide tab “Introduction”.



## FAQ:

*For which areas does this category apply?*

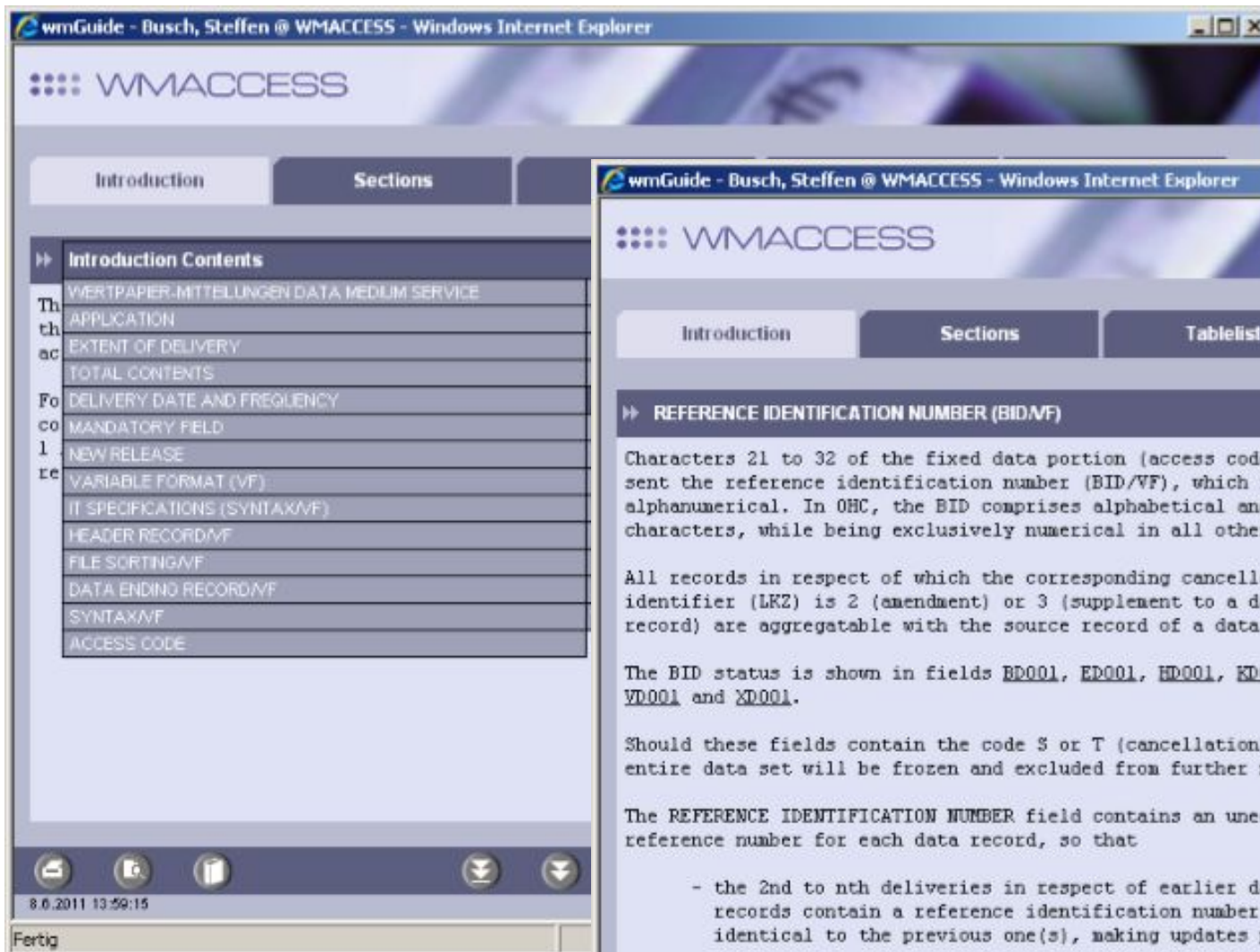
This query category is only charged in wmGuide in the tab “Introduction”.

*Will G3 be charged again, if an introduction page is called up a second time?*

No, only the initially called up introduction page within one wmGuide session is charged. All additional accesses to the same or other introduction pages are recorded, but not charged as a category G3 query.

Example:

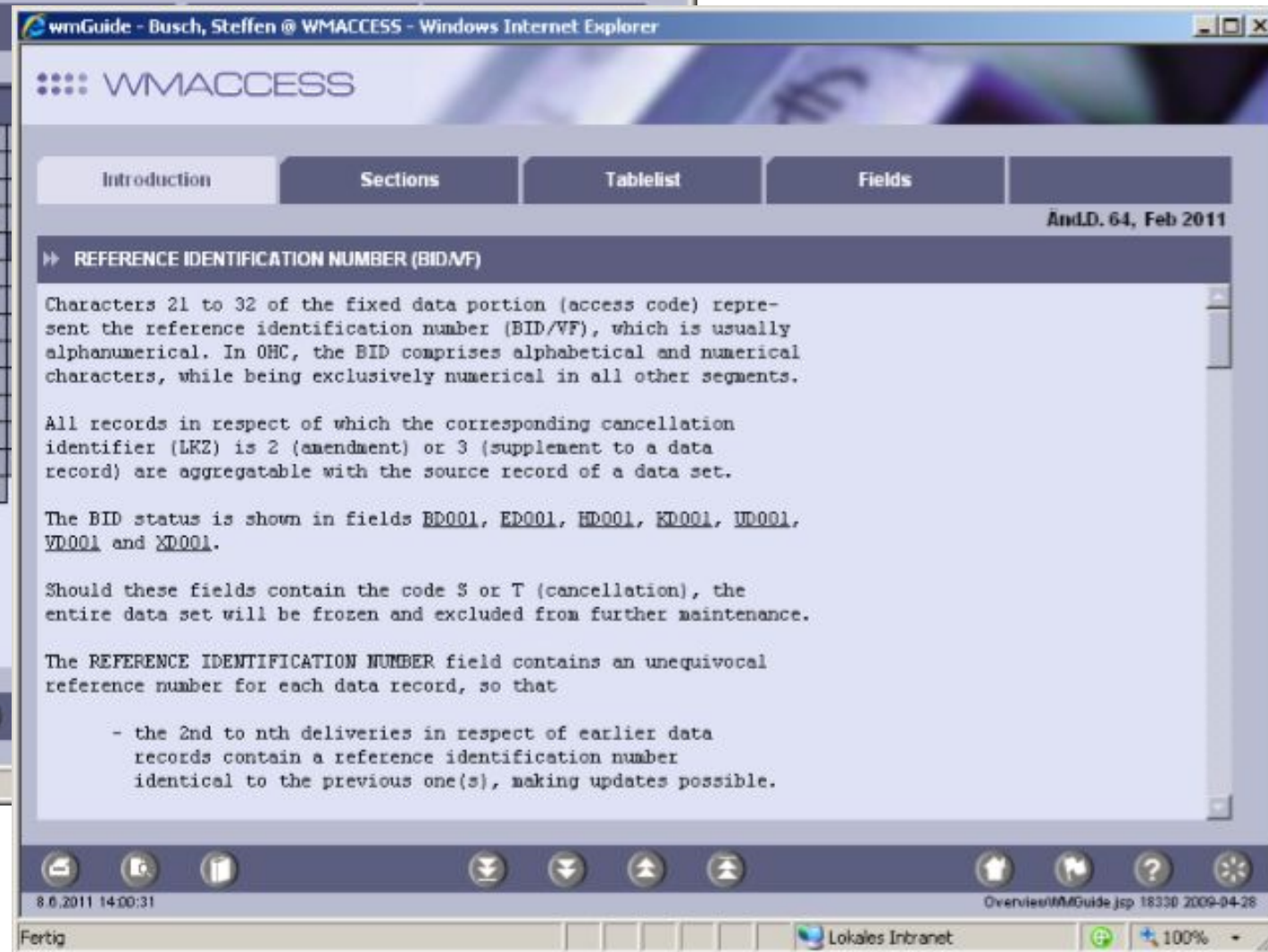
## Selection introduction – Topic Reference identification



The screenshot shows the WMACCESS web application in a Windows Internet Explorer browser window. The page title is "wmGuide - Busch, Steffen @ WMACCESS - Windows Internet Explorer". The application header displays the WMACCESS logo. Below the header, there are two tabs: "Introduction" and "Sections". The "Introduction" tab is active, showing a list of "Introduction Contents". The list includes the following items:

- WERTPAPER-MITTELUNGEN DATA MEDIUM SERVICE
- APPLICATION
- EXTENT OF DELIVERY
- TOTAL CONTENTS
- DELIVERY DATE AND FREQUENCY
- MANDATORY FIELD
- NEW RELEASE
- VARIABLE FORMAT (VF)
- IT SPECIFICATIONS (SYNTAXVF)
- HEADER RECORD/VF
- FILE SORTING/VF
- DATA ENDING RECORD/VF
- SYNTAXVF
- ACCESS CODE

The status bar at the bottom of the browser window shows the date and time "8.6.2011 13:59:15" and the word "Fertig".



The screenshot shows the WMACCESS web application in a Windows Internet Explorer browser window. The page title is "wmGuide - Busch, Steffen @ WMACCESS - Windows Internet Explorer". The application header displays the WMACCESS logo. Below the header, there are four tabs: "Introduction", "Sections", "Tablelist", and "Fields". The "Sections" tab is active, showing the "REFERENCE IDENTIFICATION NUMBER (BID/VF)" section. The content of this section is as follows:

**REFERENCE IDENTIFICATION NUMBER (BID/VF)**

Characters 21 to 32 of the fixed data portion (access code) represent the reference identification number (BID/VF), which is usually alphanumeric. In OHC, the BID comprises alphabetical and numerical characters, while being exclusively numerical in all other segments.

All records in respect of which the corresponding cancellation identifier (LKZ) is 2 (amendment) or 3 (supplement to a data record) are aggregatable with the source record of a data set.

The BID status is shown in fields BD001, ED001, HD001, KD001, UD001, VD001 and XD001.

Should these fields contain the code S or T (cancellation), the entire data set will be frozen and excluded from further maintenance.

The REFERENCE IDENTIFICATION NUMBER field contains an unequivocal reference number for each data record, so that

- the 2nd to nth deliveries in respect of earlier data records contain a reference identification number identical to the previous one(s), making updates possible.

The status bar at the bottom of the browser window shows the date and time "8.6.2011 14:00:31" and the word "Fertig". The bottom right corner of the application window shows the text "Overview/WMGuide.jsp 18330 2009-04-28".

## Tips:

- Print the introduction pages in order to save costs, if you need information from the introduction again later.



---

**WMACCESS**

Intelligent and easy search –  
quick results and decision!

[www.wmaccess.com](http://www.wmaccess.com)